



## Nationwide Installation Available

We can professionally install your VanCell in numerous locations nationwide. Please call or consult our web site for your nearest location. We are constantly adding qualified installers to our network for your convenience.

### Satisfied Customers

Richland County, Columbia, SC • Caswell County Jail, Yanceyville, NC • Brunswick County Sheriff Department, Bolivia, NC • Horry County Detention Center, Conway, SC • Lincoln County Jail, Lincolnton, NC • Charles County Detention Center, LaPlata, MD • Granville County Sheriff Department, Oxford, NC • Wayne County Jail, Goldsboro, NC • Cumberland County Sheriff Department, Fayetteville, NC • Hertford County Jail, Winton, NC • Yavapai County Detention Center, Prescott, AZ • St Charles County Criminal Justice, Saint Charles, MO • Hampton Roads Regional Jail, Portsmouth, VA • Jacksonville Beach City, Jacksonville Beach, FL • Portsmouth City Jail, Portsmouth, VA • Roanoke City Sheriff Department, Roanoke, VA • Blue Ridge Regional Jail, Lynchburg, VA • Harnett County Jail, Lillington, NC • Tamm's Correctional Center, Tamm's, IL • Portsmouth Sheriff Office, Portsmouth, VA • Hampton Correctional Facility, Hampton, VA • Jackson County Jail, Marianna, FL • Slidell City, Slidell, LA • Aiken County Detention Center, Aiken, SC • Mason County Detention Center, Maysville, KY • Richmond City Jail, Richmond, VA • Marlin Orientation, Marlin, TX • Clinton County Jail, Plattsburgh, NY • South Carolina State Hospital, Columbia, SC • Ripley County Sheriff Department, Versailles, IN • Pasco County Sheriff Department, Land O Lakes, FL • Richland County Detention Center, Columbia, SC • Buncombe County Sheriff Department, Asheville, NC • Hamilton County Jail, Chattanooga, TN • Putnam County Correctional Facility, Carmel, NY • Buncombe County Detention Facility, Asheville, NC • Currituck County Jail, Trenton, FL • Randolph County Finance Office, Asheboro, NC • Lexington County, Lexington, SC • Pitt County Detention Center, Greenville, NC • Mecklenburg County Fleet Management, Charlotte, NC • Riverside Regional Jail, Hopewell, VA • Yadkin County Jail, Yadkinville, NC • Currituck County Sheriff Department, Currituck, NC • Dawson County Jail, Dawsonville, GA • New Hanover County Jail, Wilmington, NC • Henderson County Jail, Hendersonville, NC • Hampton County Sheriff Office, Hampton, VA • Bertie-Martin Regional Jail, Windsor, NC • Oklahoma State Penitentiary, McAlester, OK • Fulton County Jail, Atlanta, GA • Pontiac Correctional Facility, Pontiac, IL • Lauderdale County, Meridian, MS • Chester County Prison, West Chester, PA • Eddie Warrior Correctional Center, Taft, OK • US Marshall's Office, Columbia, SC • Chester County Sheriff Department, West Chester, PA • Beaufort County Detention Center, Washington, NC • Beaufort County, Beaufort, SC • Iredell County Sheriff's Department, Statesville, NC • Newport News, Newport News, VA • Integrity Correctional Center, Centerville, MO • Middle Peninsula Regional Security Center, Saluda, VA • Menard Correctional Center, Menard, IL • Washington County Jail, Washington, IA • Stateville Correctional Center, Joliet, IL • Cumberland County Jail, Fayetteville, NC • New River Regional Jail, Dublin, VA • Volusia Regional Juvenile Justice, Daytona Beach, FL • Kinston City, Kinston, NC • Johnson County Justice Center, Warrensburg, MO • Airport Adult Detention Center, New Century, KS • Wichita County Jail, Wichita Falls, TX • Yavapai County Sheriff Department, Prescott, AZ • Butte Pre-release Center, Butte, MT • Gila River DOC & Rehab, Sacaton, AZ • Sampson County Detention Center, Clinton, NC • Dupage County Jail, Wheaton, IL • Ray County Security Housing, Henrietta, MO • Bryan County Sheriff Department, Pembroke, GA • Pinckneyville Correctional Center, Pinckneyville, IL • Portsmouth City Fleet Management, Portsmouth, VA • US Immigration & Naturalization Services, Atlanta, GA • Virginia Beach Jail, Virginia Beach, VA • Santa Rosa County Sheriff Department, Milton, FL • Hendry County Sheriff, Labelle, FL • Charlotte County Sheriff Office, Punta Gorda, FL • York County Sheriff, York, SC • Beaufort County Detention Center, Beaufort, SC • Oklahoma State Reformatory, Granite, OK • Schoharie County Correctional Facility, Schoharie, NY • Chatham County Jail, Pittsboro, NC • Greene County, Springfield, MO • Leon County Sheriff Department, Tallahassee, FL • Guilford County Sheriff Department, Greensboro, NC • Naval Weapon Station, North Charleston, SC • Yuma County Juvenile Detention Center, Yuma, AZ • Escambia County Sheriff, Pensacola, FL • Imperial County Jail, El Centro, CA • Johnston County Jail, Smithfield, NC • Lynchburg City, Lynchburg, VA • Baldwin County Correctional Center, Bay Minette, AL • Central Virginia Regional Jail, Orange, VA • Monroe County Sheriff Department, Monroe, MI • Plano Police Department, Plano, TX • Cabell County Home Incarceration, Huntington, WV • Albany County Correctional Facility, Albany, NY • Albermarle County Sheriff, Charlottesville, VA • Lake County Sheriff Hwy Patrol, Libertyville, IL • US Marshals Service, Greensboro, NC • Stark County Sheriff Office, Canton, OH • Chesterfield County Jail, Chesterfield, VA • Brunswick County Sheriff Department, Bolivia, NC • Tulare County Juvenile Detention, Visalia, CA • Clallam County Rd Department, Port Angeles, WA • Gunnison County Sheriff Department, Gunnison, CO • Marion County Sheriff Office, Mullins, SC • Moore County Jail, Carthage, NC • Rutherford County Jail, Rutherfordton, NC • Chemung County Sheriff Department, Elmira, NY • Jasper County Detention Center, Ridgeland, SC • Marion Correctional Treatment Center, Marion, VA • Hall Sheriff Department, Gainesville, GA • Hampton County Sheriff Department, Hampton, SC • Sutter County Fleet Management, Yuba City, CA • Kenton County Jail, Covington, KY • Naval Consolidated Brig, San Diego, CA • Cape May County Correctional Center, Cape May Court House, NJ • Goliad County Jail, Goliad, TX • Butler County Sheriff Department, Hamilton, OH • North Carolina Juvenile Justice, Raleigh, NC • St Marys County Detention Center, Leonardtown, MD • Bellevue City, Bellevue, WA • Fayette County Jail, Fayetteville, GA • Jennings County Sheriff Department, North Vernon, IN • El Paso County Sheriff Department, Colorado Springs, CO • Boone County Sheriff Department, Columbia, MO • Fairfield County Sheriff Department, Lancaster, OH • Ouachita Parish Sheriff Office, Monroe, LA • St Lucie County Sheriff Office, Fort Pierce, FL • Mariposa County Fleet, Mariposa, CA • McCormick County Jail, Mc Cormick, SC • Virginia Beach, City Of, Virginia Beach, VA • NC Department of Juvenile Justice, Raleigh, NC • Jefferson County Sheriff Department, Pine Bluff, AR • Josephine County Fleet Services, Grants Pass, OR • Pursuit Technology, Buena Park, CA • Riverside Correctional Facility, Ionia, MI • Pender County Jail, Burgaw, NC • Lee County Sheriff Office, Fort Myers, FL • St Genevieve County Jail, Sainte Genevieve, MO • Broward County Fleet, Fort Lauderdale, FL • Hopewell Sheriff Office, Hopewell, VA • Plumas County Jail, Quincy, CA • Lubbock Jail, Lubbock, TX • Charleston Police Department, Charleston, WV • San Luis Obispo, San Luis Obispo, CA • Bernalillo County Detention Center, Albuquerque, NM • San Antonio Police Department, San Antonio, TX • Hopewell City, Hopewell, VA • Waukesha County Sheriff's Department, Waukesha, WI • Tazewell County Jail, Tazewell, VA • Richmond Hill Police Department, Richmond Hill, GA • Fulton County, Atlanta, GA • Port Washington Sheriff Department, Port Washington, WI • Anaheim Police Department, Anaheim, CA • Tiffin Sheriff Department, Tiffin, OH • Newberry County Detention Center, Newberry, SC • Davie County, Davie, NC • Oklahoma Office Juvenile Affairs, Oklahoma City, OK • Spartanburg, SC • York County Detention Center, York, SC • Arapahoe County Jail, Denver, CO • Sonoma County Fleet Operations, Santa Rosa, CA • Dallas County Jail, Dallas, TX • Lillington, NC • Rolling Plains Jail Detention Center, Haskel, TX • Chicago Home Detention Center, Chicago, IL • Macon County Law Enforcement Center, Macon, GA



## Our Solution:

Using the patented Bob Barker VanCell® Prisoner Transportation System and its 3 separate compartments, you are able to effectively segregate the males from the females and the adults from the juvenile prisoner. You are also able to transport them all in a single trip with minimal staff and a single vehicle, so you can get back to the daily operations of your facility more quickly. You can even keep an eye on them on the video monitoring system on the way to the courthouse for extra piece of mind.



Bob Barker Company is America's leading detention supplier. County jails, state prisons, federal facilities, mental hospitals and residential schools are among the thousands of satisfied customers we supply.

We offer the broadest product lines and best deliveries available to you today. Our products include inmate-safe health and beauty items, clothing and shoes. We also feature flame-resistant mattresses, institutional linens, recreation items, furnishings and security items.

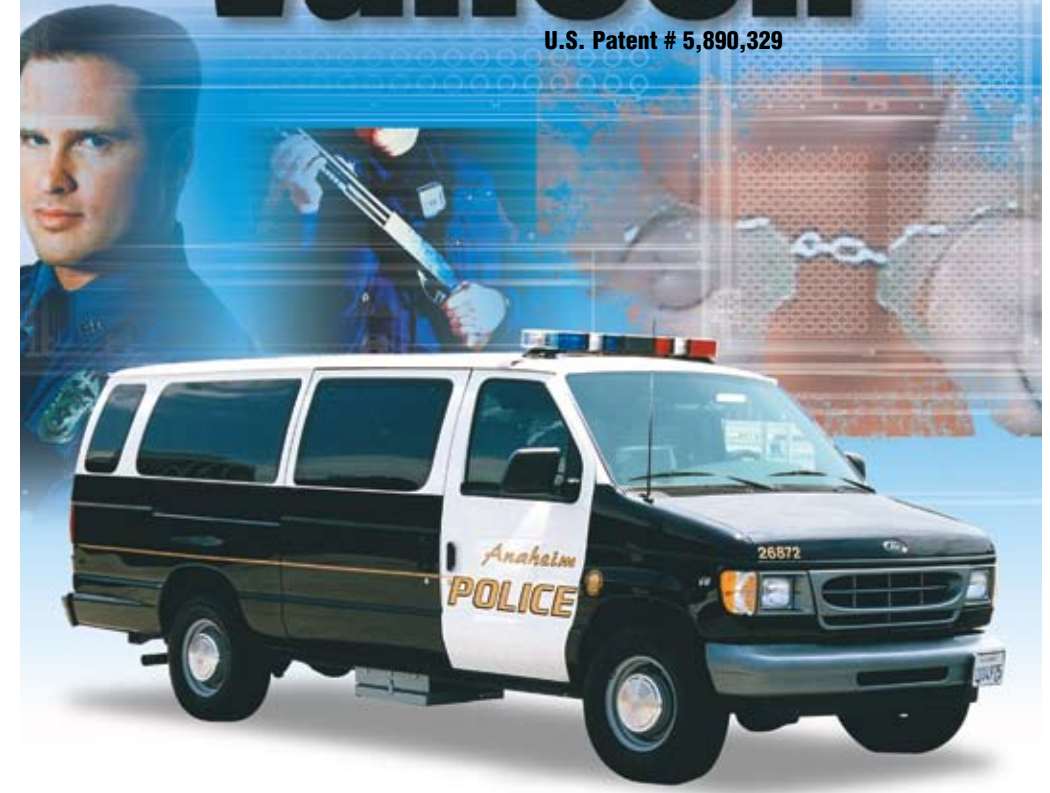
We manufacture many of our products, including our line of BarkerBuilt® detention furnishings, Flame-Chek® and ValueLine™ mattresses and our innovative VanCell® Prisoner Transportation System.

To enjoy the advantages of being a Bob Barker Company customer, call 1-800-334-9880 for your FREE catalog or shop online at [www.bobbarker.com](http://www.bobbarker.com).

**Bob Barker®**  
134 N. Main Street  
Fuquay-Varina, NC 27526  
Phone: 800-334-9880  
Fax: 800-322-7537  
[www.van-cell.com](http://www.van-cell.com)

# VanCell®

U.S. Patent # 5,890,329



## Your Problem:

It's 8:00 a.m. and you've got an hour to get eight burly men, two women, and a juvenile prisoner to the courthouse before court begins. Budgets are tight, you're short staffed, and you've got limited resources. You've got an extremely busy day ahead of you and you can't afford to make three trips across town to court, but you can't jeopardize the safety and security of your prisoners and correctional officers either. You've got more important things to worry about. What are you going to do?

*The addition of the VanCell® to our fleet has greatly improved our ability to carry out our transportation duties.*

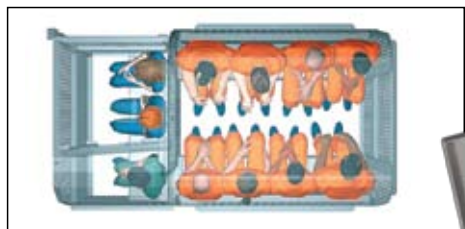
**Loren Higgins**  
Detention Supervisor  
Anaheim Police Department



# 10 Reasons our Customers Rave about VanCell®

*We bought our first VanCell two years ago. It saved us so much time and money transporting prisoners we have since bought seven more.*

**Captain Stevenson**  
New Hanover County Jail  
Wilmington, NC



**1 Segregation Capability:** Separate by gender, security classification, age, or special needs



**2 Unrivaled Security:** Enclosed construction with 12-gauge steel makes escape virtually impossible



**3 Isolation Chamber:** Isolate violent or special needs prisoners by themselves



**4 Bolt-Together Construction:** Installation requires no special equipment



**5 Reusability:** Moving the VanCell between vehicles only takes a few hours



**6 Accessibility:** Low steps allow easy shackled access. Leg irons are no problem



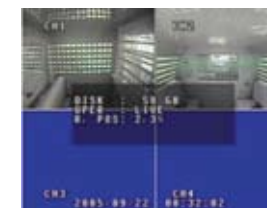
**7 Safety Features:** Seat belts, extinguishers & an emergency release system to ensure safety



**8 Visibility:** Lexan panels in the doors and walls allow good visibility all the way to the rear



**10 Lowest Cost:** All of these additional values and we are still priced lower than the competition.



**9 Optional Video Package:** Keep an eye on prisoners and the road at the same time

cost of your van by avoiding the purchase of unnecessary rear seating. And finally, for more savings, you can install VanCell yourself. Or if you prefer, you can have your VanCell installed at one of our nationwide installation locations

*A 'must have' for any department that transports large amounts of inmates.*

**Lt. Jim Gross**  
Lubbock County Jail  
Lubbock, TX



	VANCELL	VANCELL-NE9
Prisoner Seating Capacity	11	9
Number of Prisoner Compartments	3	3
Violent Prisoner Section	✓	✓
Fits Standard Chassis Van	✓	✓
Fits Extended Chassis Van	✓	✓
Seat Belts	✓	✓
Fire Extinguishers	✓	✓
Exterior Emergency Release System	✓	✓
Padded Seating	✓	✓
Lexan Panels	✓	✓
LED Lighting & Dual HVAC (when equipped)	✓	✓

VanCell® fits certain models of Ford, Chevy, GMC and Dodge vans manufactured after 1999. VanCell® cannot be installed in Dodge vans with sliding side doors. To select the model you need, determine the chassis style of your van (standard or extended) and the prisoner seating capacity you want.

Nationwide Installation: Please call us for your nearest installation location and pricing. Restocking charges will apply to returns.

**CALL FOR PRICING**



**Be sure to check out our website or call us at 1-800-334-9880 for your free CD**

[www.vancell.com](http://www.vancell.com)

## VanCell® Warranty

We warrant our VanCells to be free of any defects in materials or workmanship for one (1) year from the date of purchase. Our liability is strictly limited to the repair or replacement of units that in our opinion are found to be defective. This warranty is in lieu of all other warranties, expressed or implied.



**Advantage!**  
[www.gsaAdvantage.gov](http://www.gsaAdvantage.gov)  
Contract # GS-07F-9141S



Wouldn't you feel better knowing he's **really** secure on your next transport trip?

Hundreds of our satisfied customers agree that VanCell® is the safest and most secure transport system they've ever seen.

VanCell saves you money. Because it is incredibly durable, VanCell will outlast your transportation van's service life. And to re-install the unit into another van, you need no special tools or welding. Because VanCell has its own seating and storage system, you can save even more on the

Whether your inmate transport trips take you across town or clear across the country, you can always depend on VanCell as the most secure and economical prisoner transportation system available today.

VanCell is a completely self-contained unit, constructed to last for years with heavy-duty powder coated 10-gauge steel. VanCell features conveniences such as stairs & steps designed for easy shackled access, multiple storage compartments for stowing property, food passes for accommodating long trips, and extra safety features like seat belts, fire extinguishers and emergency exits. As an additional benefit, we offer an optional video package that lets you keep an eye on your prisoners and the road at the same time.

With VanCell, it's easy to transport mixed populations in a single trip because you can segregate prisoners by gender, age, security classification, or special needs. Our larger models include a patented isolation chamber to confine violent or protect vulnerable prisoners.

*We're looking to eventually outfit all of our transportation units with VanCell.*

**Captain J. Paul Parker**  
Sutter County Sheriff Dept.  
Yuba City, CA